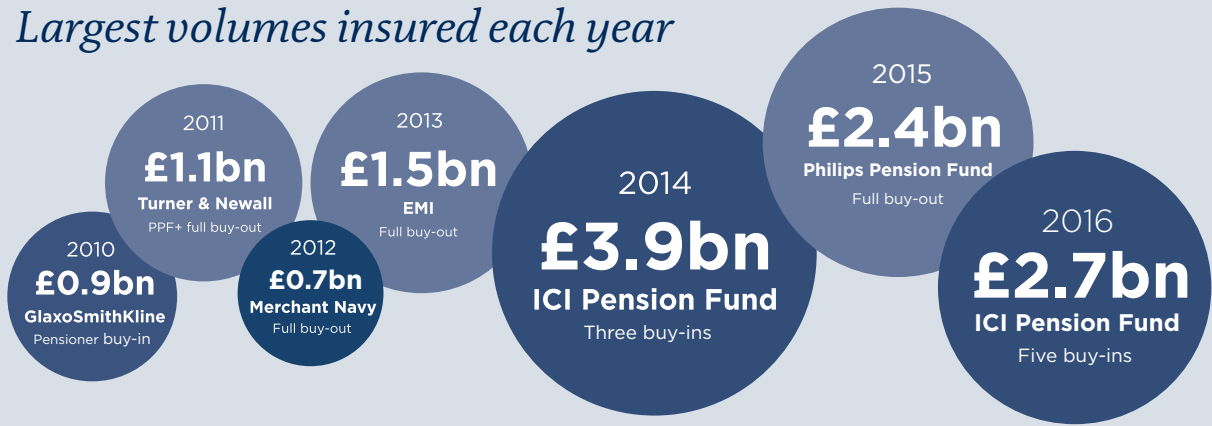
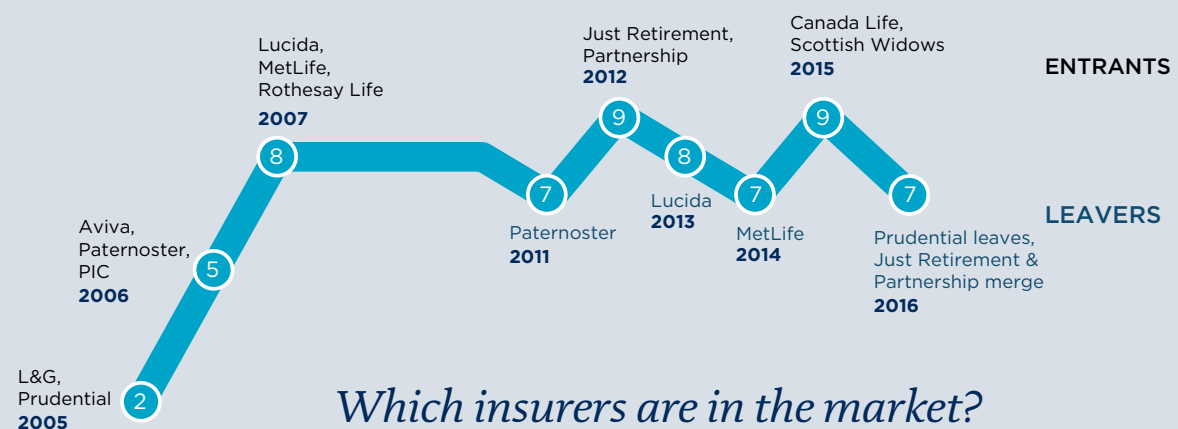
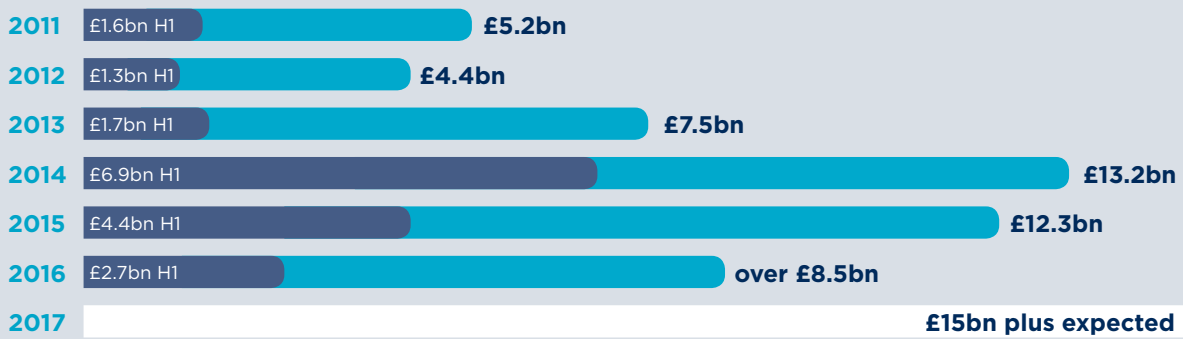


FAST FACTS: UK BUY-INS AND BUY-OUTS

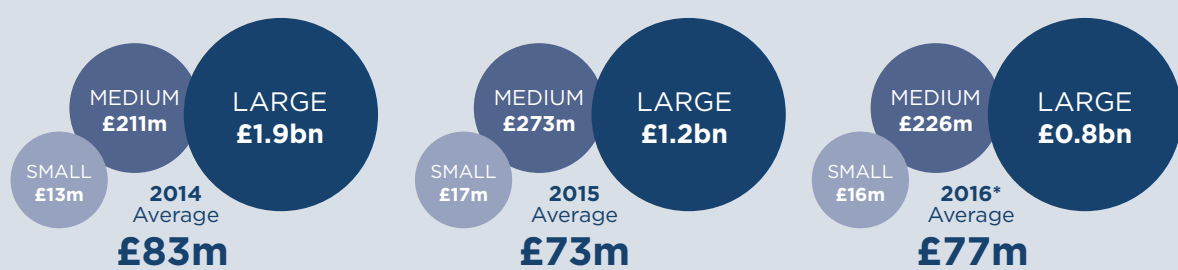
Largest volumes insured each year



Buy-in and buy-out volumes

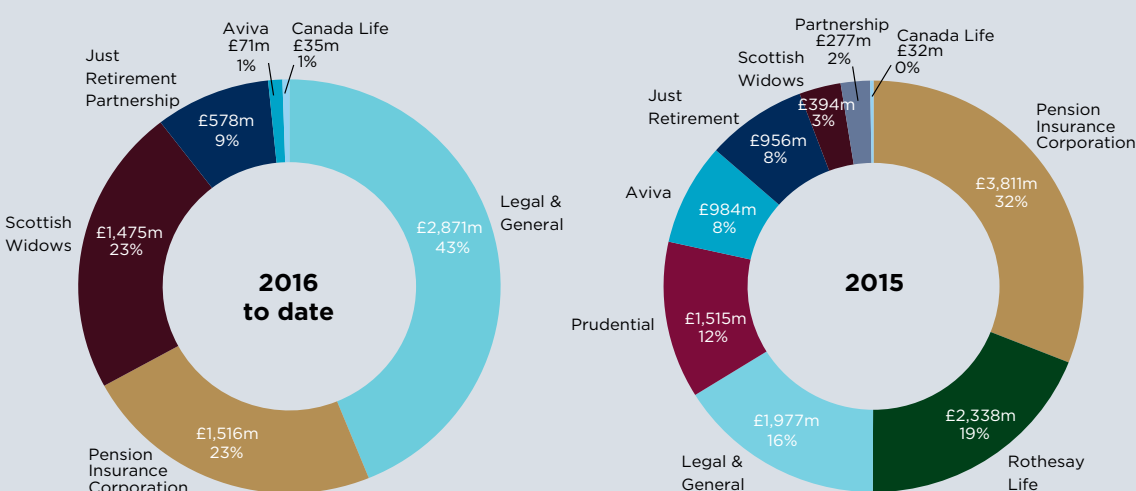


Average transaction sizes over the past three years



Small: under £100m • Medium: between £100m and £500m • Large: over £500m

Buy-in and buy-out volumes by insurer



Source: Insurance company data. *2016 includes H1 2016 insurer data plus publicly disclosed transactions to end of November 2016.

All rights to this document are reserved to Lane Clark & Peacock LLP ("LCP"). This document may be reproduced in whole or in part, provided prominent acknowledgement of the source is given. We accept no liability to anyone to whom this document has been provided (with or without our consent). Lane Clark & Peacock LLP is a limited liability partnership registered in England and Wales with registered number OC301436. LCP is a registered trademark in the UK (Regd. TM No 2315442) and in the EU (Regd. TM No 002935583). All partners are members of Lane Clark & Peacock LLP. A list of members' names is available for inspection at 95 Wigmore Street, London W1U 1DQ, the firm's principal place of business and registered office. The firm is regulated by the Institute and Faculty of Actuaries in respect of a range of investment business activities. The firm is not authorised under the Financial Services and Markets Act 2000 but we are able in certain circumstances to offer a limited range of investment services to clients because we are licensed by the Institute and Faculty of Actuaries. We can provide these investment services if they are an incidental part of the professional services we have been engaged to provide. © Lane Clark & Peacock LLP 2016.